

# Introduction to Medical Sciences

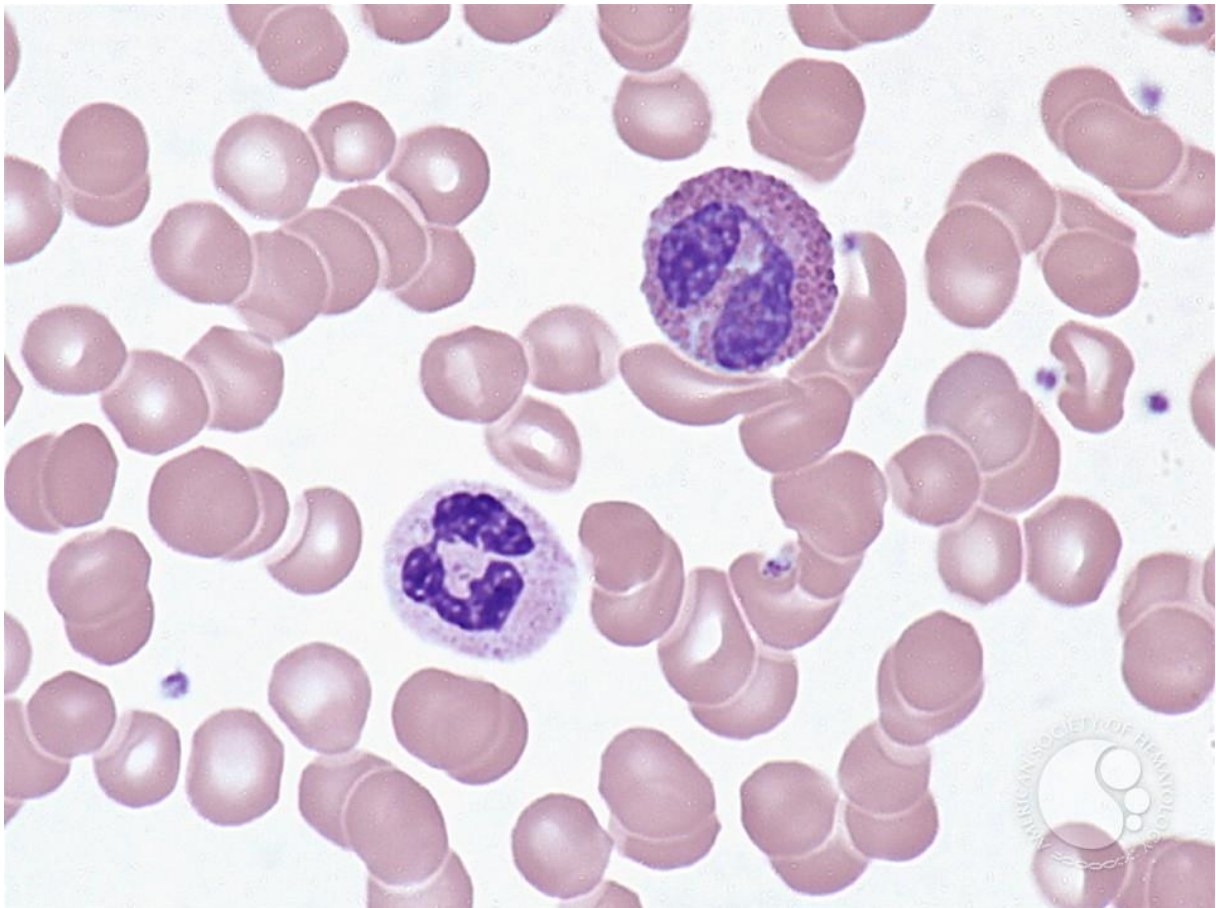
## Laboratory 1 – Haematology

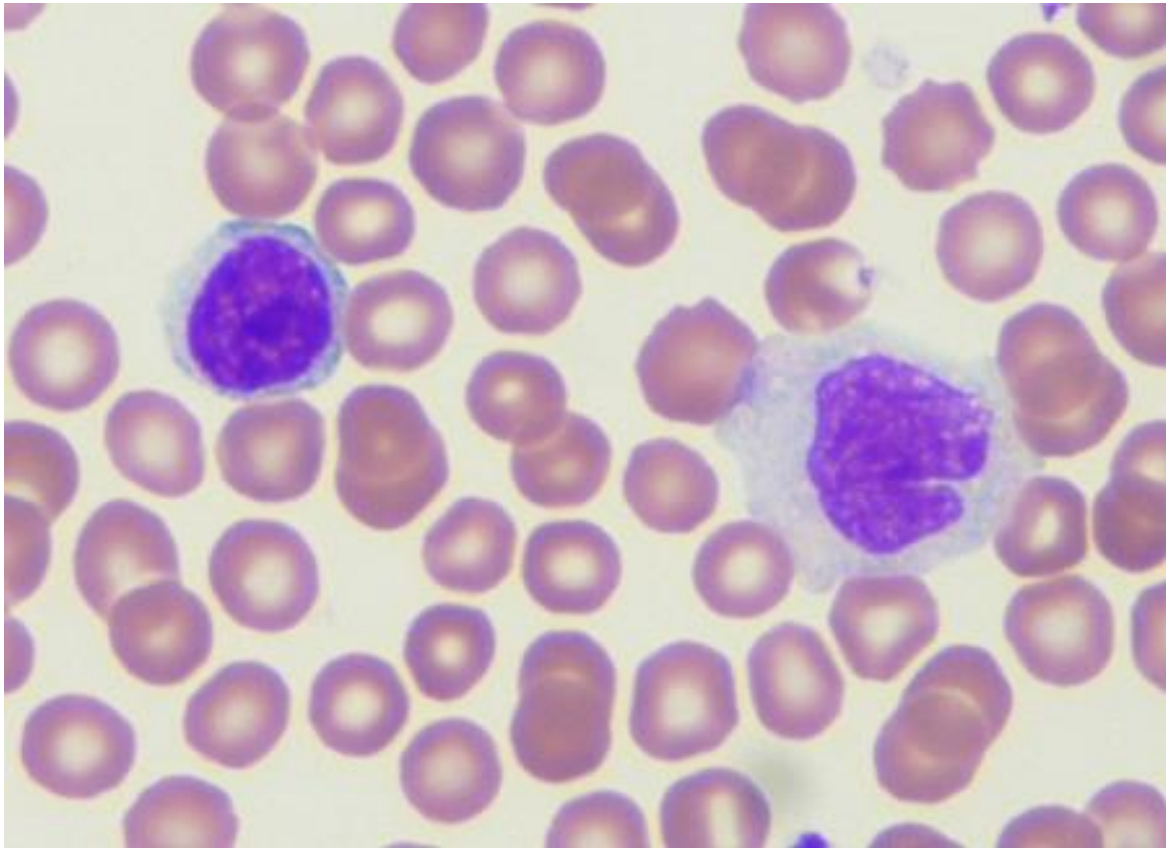
### Set B

#### Task 1

In the images mark examples of:

- red blood cell
- Platelet
- Neutrophil
- Eosinophil
- Lymphocyte
- monocyte





Describe and characterize each of the blood cells (appearance, size, functions, norms for human):

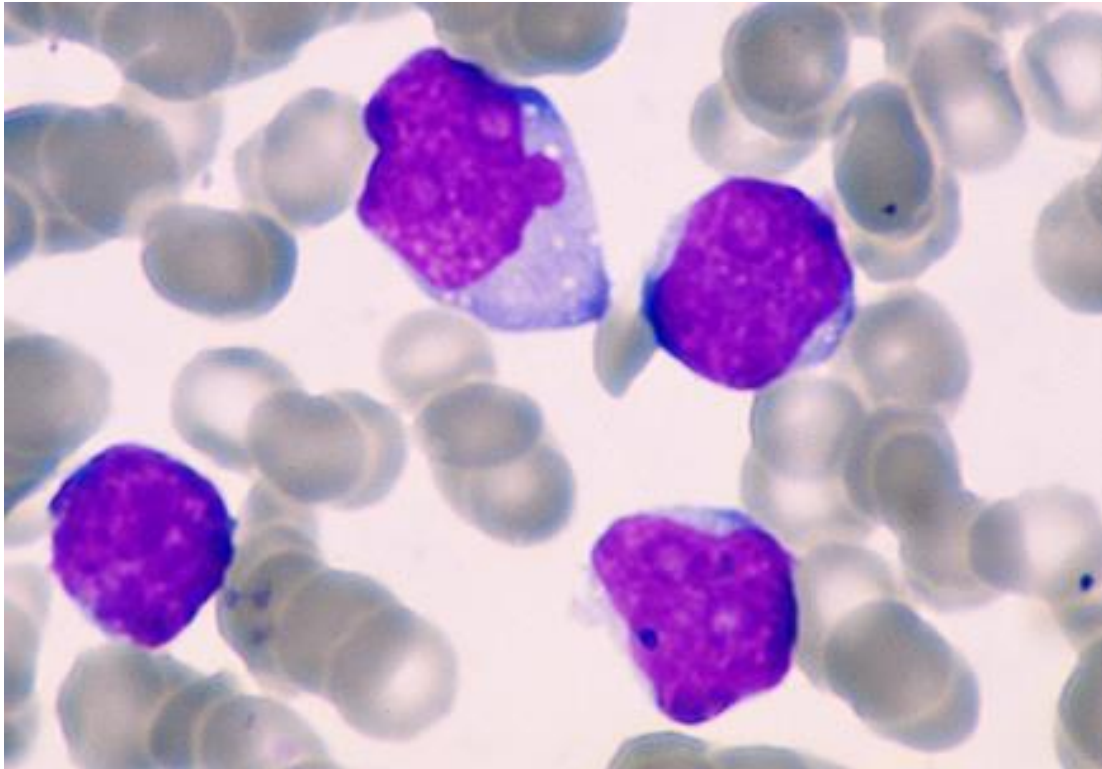
Blood cell	Appearance and size	Functions	Norms

## Task 2

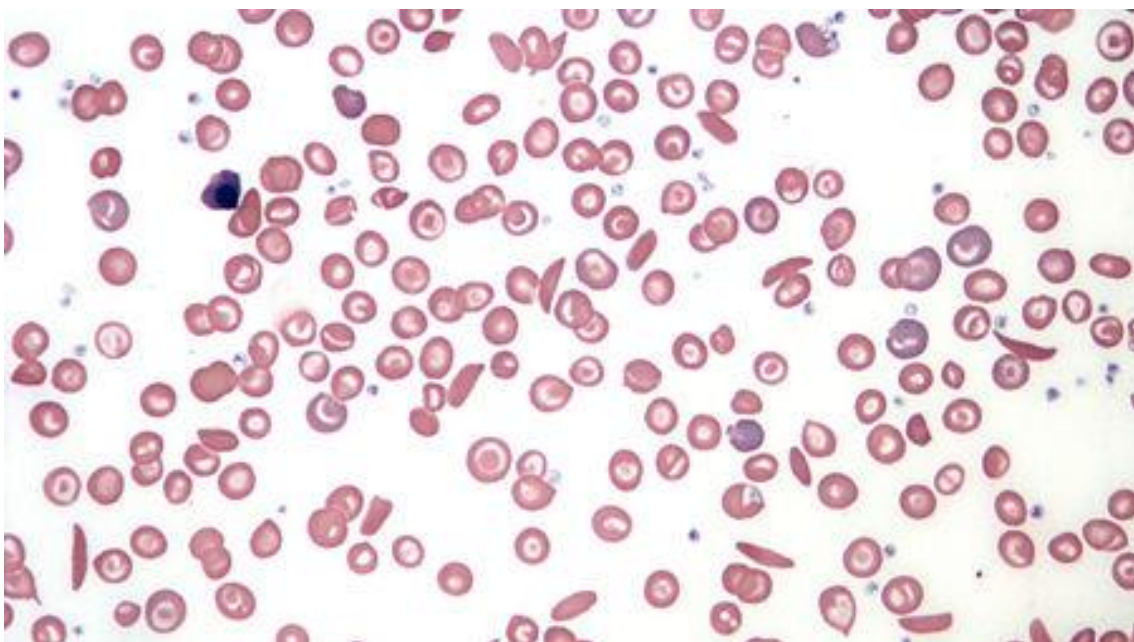
Match names of the 4 pathologies to the images. Describe each pathology (physical symptoms, molecular/cellular changes, possible treatments)

- A. Toxoplasma Gondii
- B. Malaria
- C. Sick Cell Anemia
- D. Lymphatic Leukemia

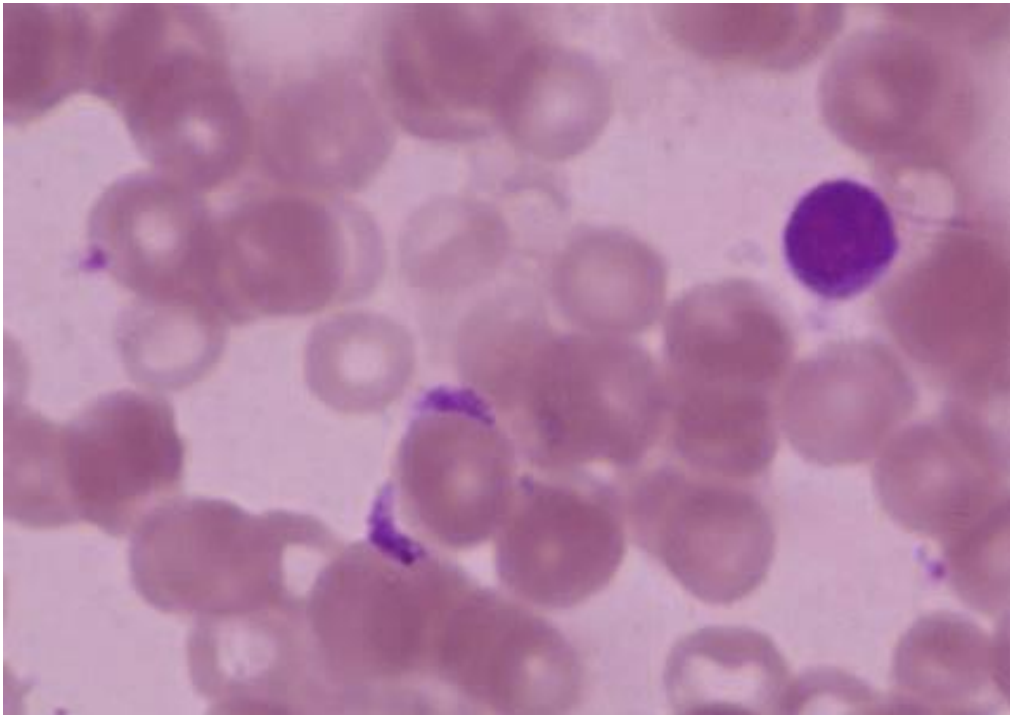
1.



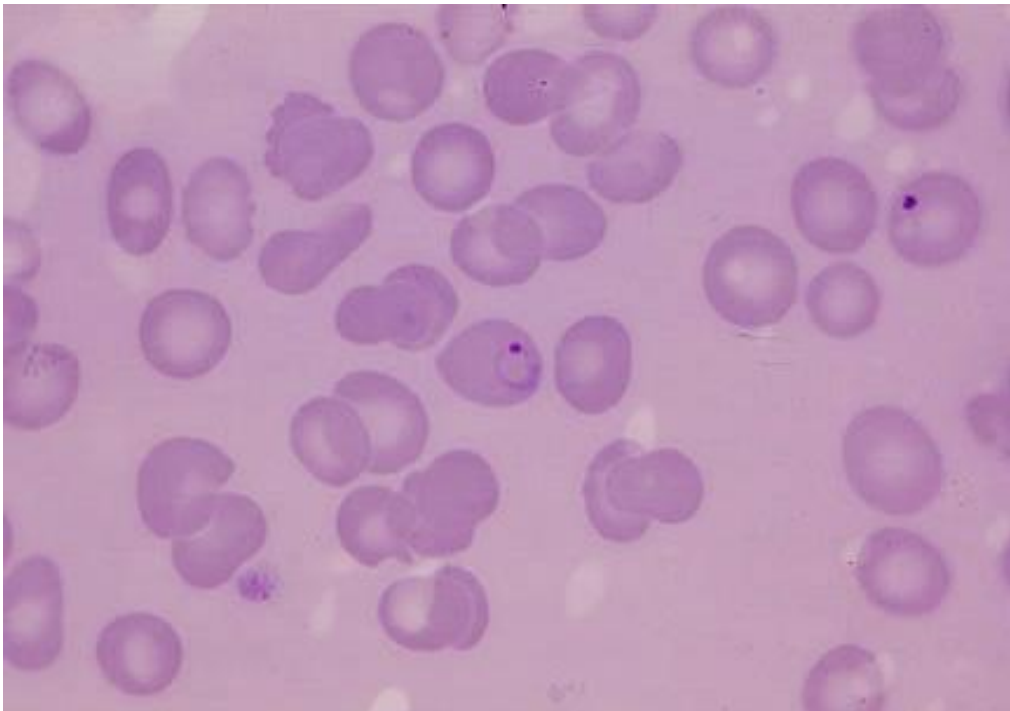
2.



3.



4.



Disease letter	Image number	Physical symptoms	Molecular changes	Treatment
A				
B				
C				
D				