

# Introduction to Medical Sciences

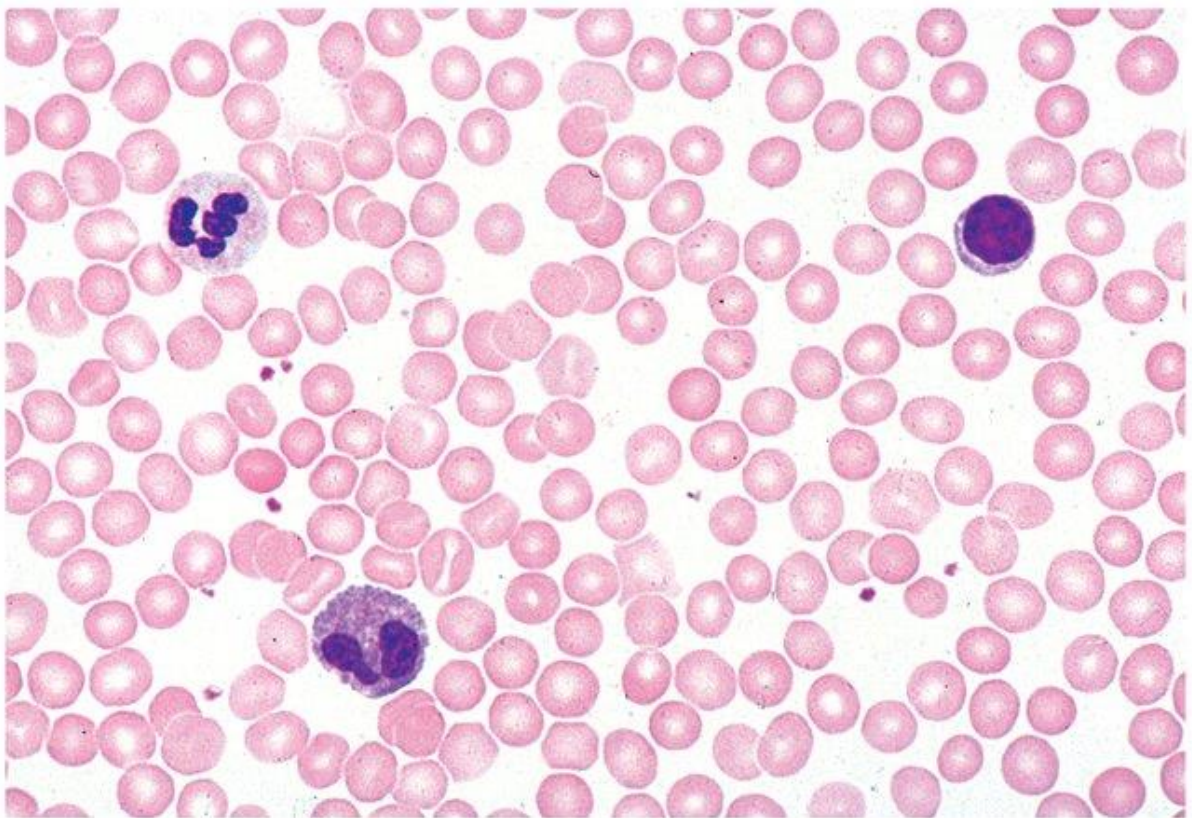
## Laboratory 1 – Haematology

### Set C

#### Task 1

In the images mark examples of:

- red blood cell
- Platelet
- Neutrophil
- Eosinophil
- Lymphocyte
- monocyte





Describe and characterize each of the blood cells (appearance, size, functions, norms for human):

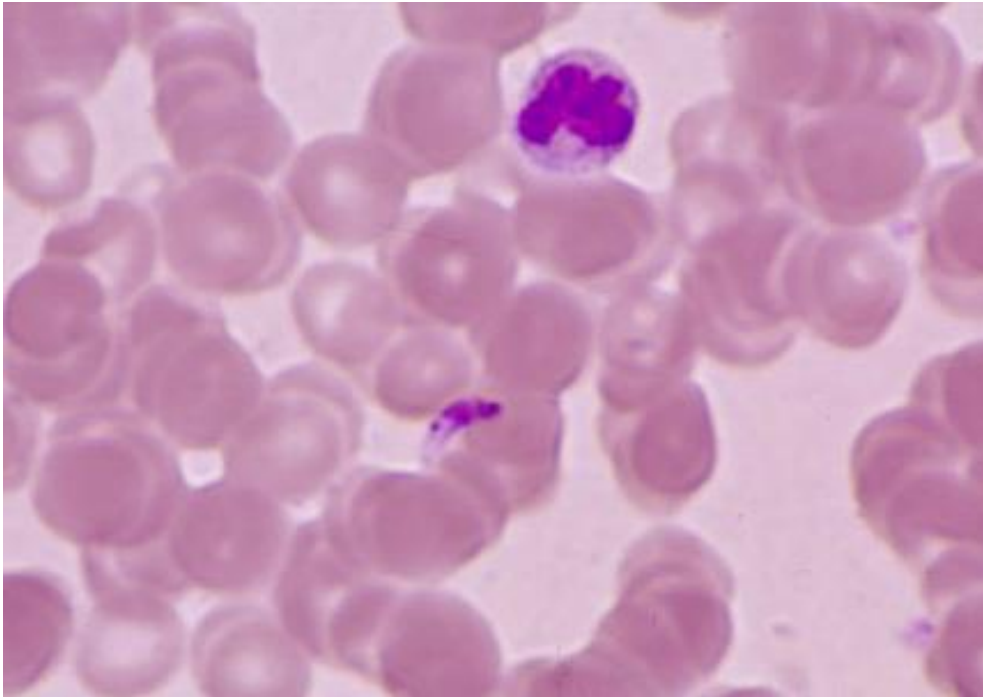
| Blood cell | Appearance and size | Functions | Norms |
|------------|---------------------|-----------|-------|
|            |                     |           |       |
|            |                     |           |       |
|            |                     |           |       |

## Task 2

Match names of the 4 pathologies to the images. Describe each pathology (physical symptoms, molecular/cellular changes, possible treatments)

- A. Thalassemia Major
- B. Toxoplasma Gondii
- C. Myeloid Leukemia
- D. Filariasis Wuchereria Bancrofti

1.

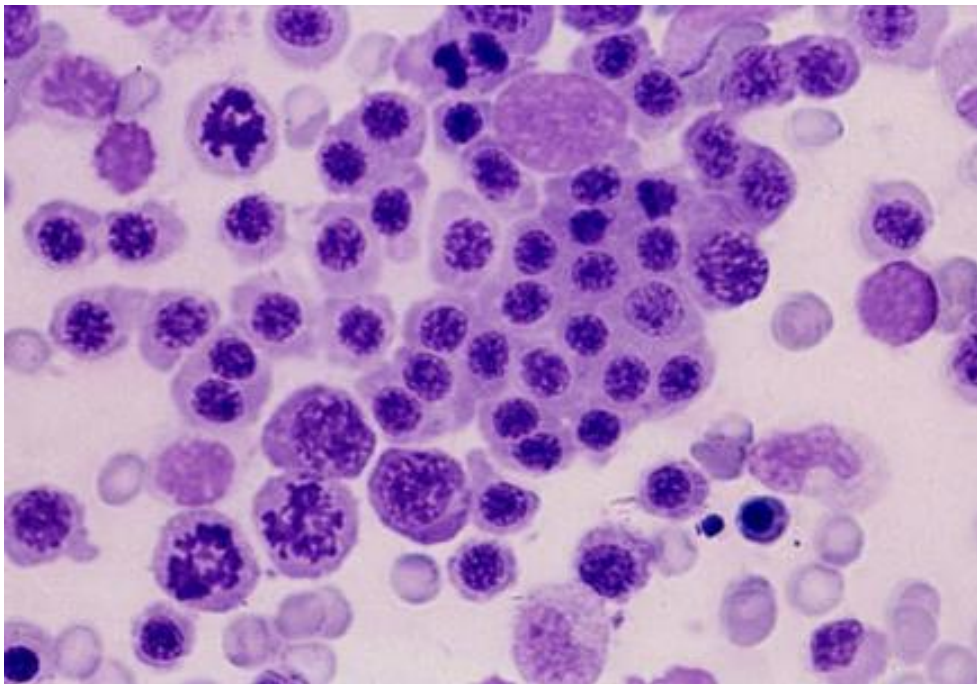


2.

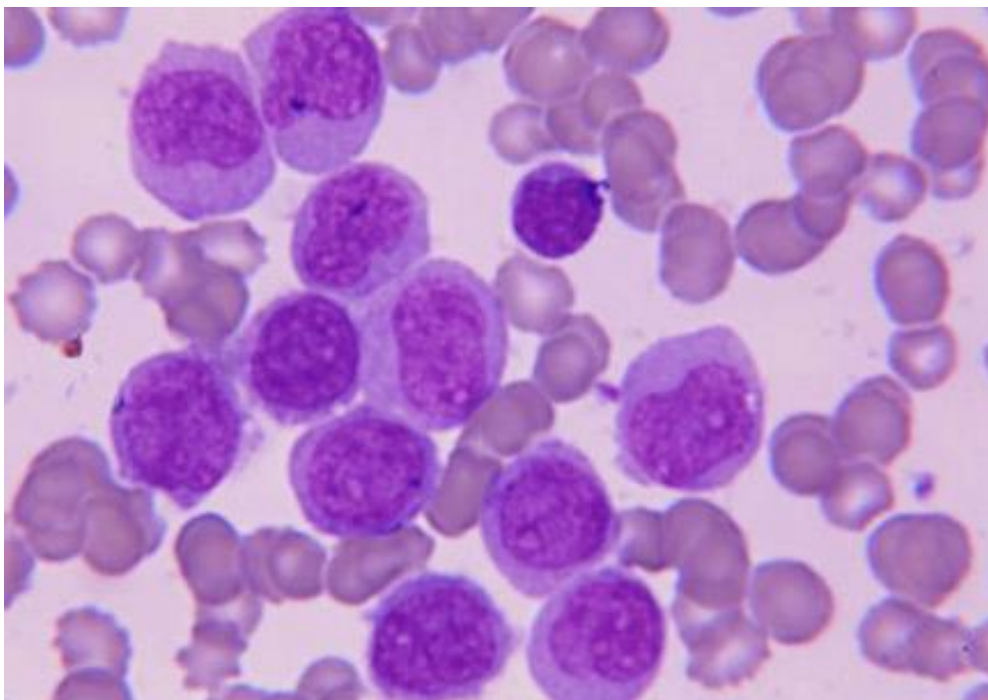




3.



4.



| Disease letter | Image number | Physical symptoms | Molecular changes | Treatment |
|----------------|--------------|-------------------|-------------------|-----------|
| A              |              |                   |                   |           |
| B              |              |                   |                   |           |
| C              |              |                   |                   |           |
| D              |              |                   |                   |           |